



SQR ENGINEERING SERVICE

Total Fire Building & Safety Solutions

Service Quality Reliable.....





Company Profile

SQR ENGINEERING SERVICE is recognized as a leading company for consultancy, design, installation & service on fire, safety & security system, SQR brings a singular dedication to the full spectrum of commercial and residential security needs, this dedication is through the leadership, quality, price, and service customer satisfaction is our unique vision.

Our service & Activities:

- ❖ Automatic Fire hydrant system with fire pump.
- ❖ Automatic sprinklers system with fire pump.
- ❖ Automatic fire alarm and detection system.
- ❖ Fire Rated doors, Steel Building, Industrial Boiler.
- ❖ Sound, PA and Burglar Alarm system.
- ❖ CCTV based security surveillance system.
- ❖ Access control & Time attendance management system.
- ❖ Automatic co2 Extinguishing system.
- ❖ Generator & Sub-Station, Industrial Voltage Stabilizer (IVS).
- ❖ Automatic Foam Extinguishing System.
- ❖ Power Generation, HT system, LT system, PFI, Transformer.
- ❖ On Line Off Line UPS, IPS, INVERTER, VS, AVR, SMF BATTERY, SOLAR, LED Product.
- ❖ Fire man equipments such as fire proof dress, gas mask, breathing apparatus, safety boot, safety helmet, hand gloves, life line, smoke light, etc.
- ❖ We can help you about fire Service and civil de-fence & insurance license.

Our all systems & equipment certified by the Bangladesh fire service and civil defense and BSTI, Quality:

- ❖ Quality is our pride.
- ❖ We provide guarantee to all our products that comply with the best international standards.
- ❖ Committed to provide spare parts of our products for at least 5 years.
- ❖ After Installation We Provide 3 Years Service Guarantee.

Our Overseas Partner & International Sources:

- ❖ Steel Recon Industries, SDN, BHD, Malaysia (Fire hydrant, sprinkler & gas Suppuration system) .
- ❖ Calpeda Caprari fire pump Italy.
- ❖ Zeta Fire detection system UK.
- ❖ TOA Sound System Japan.
- ❖ Avtech CCTV System Korea.
- ❖ Proline UK. For Access Control & Time attendance systems.
- ❖ Jindong Pacific Fire Fighting Equipments China.

Experience:

We have over 07 Years Experience in this line for designed, installed, operated fire alarm. fire hydrant and fire extinguishing system in addition to safety and security equipments to many government, Sami-government, private sectors in Bangladesh.

For More information Please do not hesitate to contact us. We are always at your service.

Visit- WWW.Sqrbd.com



Fire doors are designed to protect property and life in the event of a fire. For this the door must serve as a fire and smoke barrier. Studies have shown that more people have lost lives due to smoke asphyxiation than fire.

Fire Doors Must Serve Four Main Functions.

- Serve as regular door at all times
- Provide ready egress from a fire area during a fire
- inhibit spreading of fire
- protect life and property by reducing smoke hazards.

When an opening requires strength, durability, or maximum fire resistance, steel doors and frames provide the qualities to meet these needs. Due to growing access control needs, fire doors have today evolved to accommodate the growing electrified functions a door must support

Designed to meet the life-safety requirement in various types of building and structures. **SQR ENGINEERING SERVICE** fire doors help compartmentalize and contain the spread of fire. These doors complement existing passive fire-fighting systems. These doors also meet all the stipulated international national and regional fire safety standards.

These doors are available with honeycomb core as standard infill material with other optional cores. These doors are rated for 90, 100, 120, 180 and 240 Minutes fire withstanding ability.

All fire doors are factory finished with epoxy primer and polyurethane-finish paint.

APPLICATIONS

These doors can be used in high-rise buildings, metro railway stations, telecom centers, power plants, cellular network stations, garment processing units, shopping malls, industrial plants, multiplex hotels, auditoriums. Software parks, restaurants, etc **SQR SERVICE** doors and frames are designed to perform and in the most demanding environment.



FEATURES

- Available in galvanised or stainless steel
- UL labeled doors for 90, 120, 180 minutes
- Clear vision litefoxup to 120 minutes fire rating.
- No welding joints and sharp edges, interlocking at the stiles
- Factory prepped to receive all types of hardware
- High aesthetics and robust structure
- Fully flush constructions
- Easy to install on a flush wall opening & dry wall partitions
- Factory finished for primer and paint finishes.



FIRE HYDRANT SYSTEMS:

In a building or Factory, a fire hydrant system is a safety measure or emergency equipment required in some buildings that comprises a series of components that when assembled together provide a source of water to assist fire authorities in a fire. The pressure and flow requirements vary according to the classification, floor area, sprinkler protection & fire hose. Fire hydrant systems are designed and installed in accordance with Bangladesh & International Standard and comprise the following primary components: Water Supply & Storage, Pipe work & Valves Breeching Inlets, Booster pump srt, Pillar Hydrant, Angle or Landing Valve & Coupling, Fire Hose Pipe or Reel, B Jock Plan.



Fire Pump

**Perfomence.,Range: (50HZ)
According NFPA20**

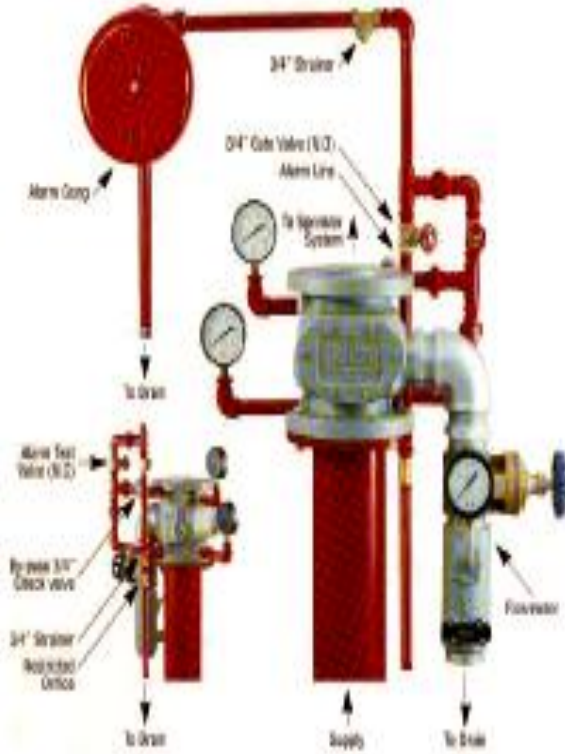
1. Capacity : up to 600 m3lh
2. Head : up to 158m
3. Speed : up to 2900rpm
4. Power : up to 250kw
5. Voltage : 220v to 440V
6. Temperature range : Within-10 to 100 Deg C
7. Working pressure : Within 16bar





Automatic Fire Sprinkler System Equipment with Fire Pump

Sprinkler Alarm Valve



The alarm valve is an alarm device designed for installation in a sprinkler system. It is used to actuate a fire alarm when flow of water from the sprinkler system exceeds that of a single sprinkler. When a sprinkler is in operation, the resulting water flow lowers the pressure in the sprinkler system. The greater water supply pressure then causes the alarm valve clapper to open. The seat ring opening of the alarm valve allows the water to flow into the alarm line connection which will then operate the alarm gong. The by-pass connection is the check valve allows pressure surges from the supply to by-pass the alarm valve clapper. An excess system pressure is thus created which steadies the clapper.

A retard Chamber is used when the water supply pressure fluctuates, such as public main water supply. It is used to prevent false alarms caused by surges or fluctuations in pressure.

Specifications

Working Pressure 175Psi (12bar)

Factory hydrostatic test pressure 350 Psi (24bar) Flange

Connections : ANSI B16.1 125 FF Flange Thread Connections:

BSP



Vertical Multistage Fire Pump

Sprinkler Head



Centrifugal Pump



Diesel Engine Fire Pump





Fire Hydrant System Equipment



BIB NOSE VALVE



OBLIQUE VALVE



DELIVERY HOSE COUPLING

Specification

I. Aluminium Alloy to BS 1490 LM 25

II. Copper Alloy to BS 1400 LG 2

Finishing: Natural

Coupling Tail : Ribbed Tail



2-WAY & 4 WAY BREECHING INLET



HOSE RACK ASSEMBLY

SRs hose rack assembly is located inside buildings at the wet or dry riser outlet. It features a rack in which hangs the layflat fire hose (3Cm). An automatic release mechanism allows water to flow through the hose after removal of the hose and nozzle. The rack is available in sizes of 1-1/2' and 2-1/2". There are two methods of mounting the hose rack. One is by using a wall bracket and the other is by fixing on to a right angle valve.



SRI FIRE HOSE, TYPE 3

External and internal rubber lining, with polyester fibre reinforcement.

Resistance to oil, acids, alkalis and industrial chemicals.

Resistance to heat, cold and ozone.

Standard length: 3Cm

Available colour: Red

Manufactured to BS 6391 Type 3



Fire Hydrant System Equipment



Oscillating Monitor

Code no. FOS043-GM-100NA
Automatic horizontal oscillation when water pass through monitor
Oscillation angle adjustable in 15 steps from 30) to 12
Oscillating speed adjustable from 2 to 10 per sec
Manual movement 360) horizontal
Material of construction gun metal



Water / Foam Pistol Grip Nozzle (Jet/Fog)



Jet Nozzle Complete With Branchpipe



Diffuser Nozzle 500 (Jet/Spary)

Jet/Spary Nozzle Control Valve

Hose Cabinet



Model A Nose Cabinet Technical Specification

Model A Nose Cabinet Technical Specification

Dimension	900.0mm (w) x 1100.0mm (H) 300.0mm (D)
Material	Mild Steel
Thickness	1.2mm
Installation	Wall Mountaed
Capacity	1-1/2" or 2-1/2" Hose Rack Assembly
Paint Finish	poxy powder re

Single Low Pressure Control Features
Pressure range : ito 10 bar
Differential pressure ito 3 bar SPDT Contacts
Adjustment of range and differential can be done by turning the hexagonal screw Applications
Pressure sensing of sprinkler system to provide automatic starting of sprinkler system pumps.

Cast Iron Gate Valve



4" ANSI inlet flange

Specification

Non rising stem and 0.S & Y
Body, bonnet, disc and handwheel material
Cast iron to BS 1452 Gr 220
Body seat ring and disc seat ring: Gummetal LG@
Stem material : Polyamide (Non-asbestos)
Gasket Material : Rubber
Avaliabler with handwheel operated or key operated to BS 5163
Flange ends to BS10 table E or BS4504 PN16

Silent Check Valve



Design Features

Prevents water hammer due to flow reversal, as valve will completely close before reversal of flow takes place.
PN16 or Table E Flange connection
Working Pressure : 16 Bar
Seat Test Pressure : 17.6 Bar
Body Test Pressure : 24 Bar
Installation : Horizontal or Vertical

Cast Irony-Strainer



Specification

Body and Bonnet material: Cast Iron to BS 1452 GR220
Screen material: Stainless steel
Flanged:BS10 Table E
Working Pressue: 16 bar
Test pressure : 20 bar
Screen size:2mm diameter



Code No. : SPR266-P77

Butterfly Valve Pn16 Bomba Approved

Flexible Expansion Joint

Wafer Check Valve



Specification

Working Pressure : 16 Bar
Factory pressure test :24 Bar
Body material: Cast iron BS 152
Disc material: Ductile iron
Seat: EPDM
Suitable for BS 10, BS 4504 and ANSI 150 flange



Flange Type Double Sphere



Flange Type Single Sphere



Automatic Fire Detection & Alarming System Equipment

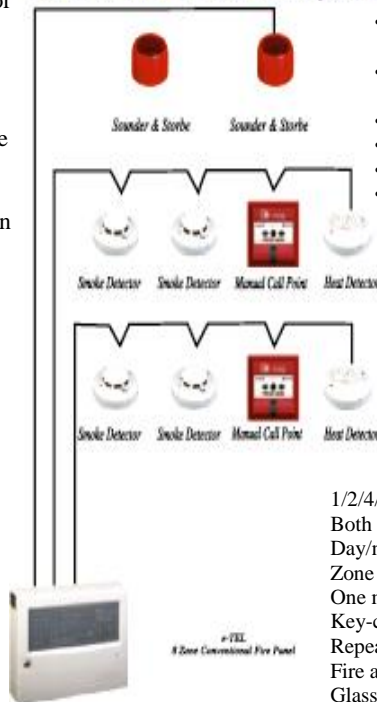
Elite

Analogue Addressable Fire Control Panels & Repeaters
UL/ FM Approved



Addressable Manual Call Point (MCP) with re-settable (non breaking) glass Additional volt free contactts for local interfacing (i.e. PTZ camera Preset)
Two part plug-in construction with base mounted termination allows for easy installation and connection.
MCP can be addressed and plugged in to base at time of commissioning.
Electronically addressed
Suitable for semi-flush and surface mount installation

Conventional Fire Alarm System



- Two parts construction with base mounted termination allows easy installation
- Evacuate only or Alert/Evacuate mode can be set through handheld programmer.
- Remote start input can be used to co-operation with other systems.
- Strobe provided by high intensity LED cluster Electronically addressed.
- Compatible sound with sounder base (i-9402 /C-9402
- Conventional Sounder and Strobe version part number C-

Conventional Fire Alarm Panels



- 1/2/4/16 zone conventional Fire Alarm panels.
- Both End of line Resister and Active End of Line can be used.
- Day/night mode selected.
- Zone isolate control
- One man test.
- Key-control evacuate over-ride.
- Repeater is available for GST 108
- Fire alarm output for remote alarm
- Glass change terminal for remote control
- Active EOL enables multiple alarm reporting from same zone
- Active EOL max 15 fire detectors and infinite manual buttons each zone

Addressable Mini Fire Panel



Single loop panel
Can connect upto 128 addressable devises
8 zone with manual intervention and control
Self configurable via panel keyboard
Easy commissioning making the GST 100 an ideal product for electrical installers.



CCTV Based Security Surveillance System Equipment

Color Sony CCD Camera



PR301
1/3" B/W Sony CCD
420 TV Lines
0.1 Lux / F1.2
AGC, AI, AES
DC1TV
C/CS lens Mount

PR305
1/3" Sony B/W CCD
480 - 1000 TV lines
0.1 Lux / F1.2
AC230V
C/CS Lens mount
V.D/D.D selectable



Digital Quad Real Time & High Resolution



Resolution Color - 480TVL, B/W - 520TVL



DC Auto Iris and Manual Iris Lenses



Indoor / Outdoor Brackets



Indoor / Outdoor Pan / Tilt Drive



Indoor/ Outdoor CCTV Housing With Additional Blower And Additional Heater



Mini Color Camera



Digital Switchers Steel With grey Enamel Finish



Digital Color Sony CCD Dome Camera



Professional multiplexing DVR 4, 8 & 16 Camera and 1 Audio Output



MPEG-4 compression format for crystal clear image



Our Valuable and Active Clients:

Dhaka Medical Collage, Dhaka.

Mainett(BD) Pvt.Ltd,DEPZ,Savar,Dhaka.

GreenTextiles Ltd,Valuka,NizuriBazar, Mymensingh.

Doreen Garments Ltd. Zirani Bazar, Ahsulia.

Crown Garments Ltd., Valuka,Mymensingh.

The Rose Garments Ltd. Dakkhin Khan, Uttara, Dhaka.

Sheltech Abir Garden Banani Dhaka.

Ehsan Garments Ltd. Targach, Gazipur, Dhaka.

Shade Fashions Ltd. Saver, Dhaka.

Quantum Corporation Ltd. Islampur, B Baria.

Bata Shoe Company Ltd. Tangi, Gazipur.

Denim Expart Ltd. KEPZ, Chittagong.

B S A Group, Pahartali, Sagorika, Cgittagong.

Eastern Kint Wear Ltd, Chittagong.

Reza Group Jamgora, Ashulia.

Ayesha Clothing Co Ltd.B Road Ashulia.

Doreen Attire Ltd.Zirani Bazar, Asulia.

Bata Shoe Company Ltd. Dhamrial, Dhaka.

Mint Apparel Ltd. Maleker Bari, Gazipur.





SQR ENGINEERING SERVICE

Total Fire Building & Safety Solutions





Government of the People's Republic of Bangladesh
National Board of Revenue

Taxpayer's Identification Number (TIN) Certificate

TIN : 635126632436

This is to Certify that **MD. SHORIFUL ISLAM** is a Registered Taxpayer of National Board of Revenue under the jurisdiction of **Taxes Circle-273 , Taxes Zone 13, Dhaka.**

Taxpayer's Particulars :

- 1) Name : **MD. SHORIFUL ISLAM**
- 2) Father's Name : **Md. Eashaque Miah**
- 3) Mother's Name : **Khadeza Bagum**
- 4) Current Address : **Noth Dotta Para, Chanki, Ershad Nagar, Tongi., Gazipur**
- 5) Previous TIN : **Not Applicable**
- 6) Status : **Individual**

Date : December 08, 2014



Please Note:

1. A Taxpayer is liable to file the Return of Income under section 73 of the Income Tax Ordinance, 1994.
2. Failure to file Return of Income under section 76 is liable to:
 - (a) Penalty under section 184 and
 - (b) Prosecution under section 184 of the Income Tax Ordinance, 1994.

Deputy Commissioner of Taxes
Taxes Circle-273
Taxes Zone 13, Dhaka
Address : Hazzari Plaza, 5th Floor, 388, Tongi Overpass
Road, Moulvibazar, Dhaka Phone :



OVER VIEW:

SQR ENGINEERING SERVICE LTD, is a multi-disciplined (Mechanical, Electrical, Renewable energy, Electronic) engineering SQR organization providing high-quality and innovative high end technology and technical support and solution to Power Plant (HFO,GAS,Diesal) Industrial, Residential and Commercial projects on turnkey basis.

The activities of this organization are initiated since 2005. We do believe that “Engineers are the second creator” and we are ready to take up the new challenges in the coming days of modern science and technology.

Our aim is to introduce & implement new innovative technologies in Power Plant, Industrial, Residential and Commercial sector for creating sustainable growth to our country.

We are determined to present something different & distinct with our skilled manpower and excellent team work to solve any kind of technical problems.

GENERAL INFORMATION OF THE ORGANIZATION:

Name: **SQR ENGINEERING SERVICE LTD**,

Address Offish 18,sonargaon Road(3rd Floor) Hatirpol
Dhaka-1216, Bangladesh.

Mobile :01787104022

Email Address: info@sqrbd.com.com

Web Address: www.sqrbd.com

Year of Establishment 2008 from SQR SERVICE

Trade License No 0310340

Tin No of Managing Director Md.Shoriful Islam Rasel

Tin No. 635126632436

Bank Certificate:

Bank Name BRACK Bank

Account Title: SQR Engineering Service

Current Account No 1515203346163001



QUALITY STATEMENT:

SQR ENGINEERING SERVICE LTD Engineers are capable of expanding the progress of large or small projects.

Our professional staff has professional engineering and design experience. **SQR ENGINEERING SERVICE LTD** Uses the same attention to technical detail and project management that has produced uniformly economical results for our clients.

To provide excellence in quality, service and customer satisfaction which are quality goals of our team are to

- Make client service our top priority.
- Ensure design quality through an attitude of prevention rather than detection
- Encourage continuous improvement of design through engineering development, automation and Improvement of project management processes.
- Provide well planned and through engineering designs proven technologies.
- Produce engineering documents which are clear, concise and professional.

Quality assurance starts with an attitude of prevention rather than detection because quality is defined by the client; quality assurance begins with an accurate assessment of your needs. We will start by listening to your needs and objectives for your project and we will design accordingly.

The needs assessment including –

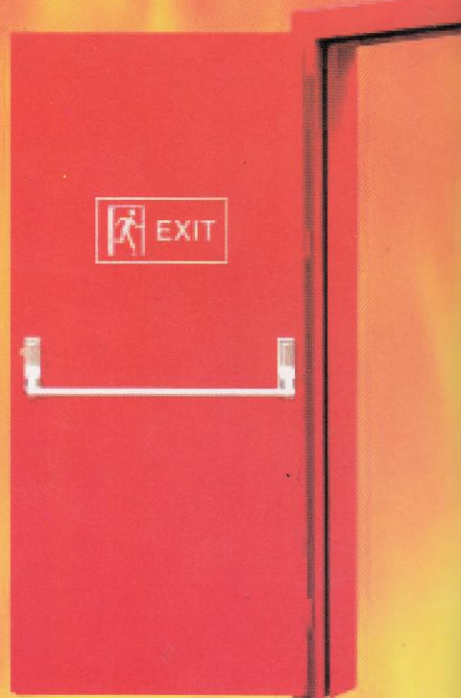
- Return on Investment
- Budget
- Serviceability
- Sustainability
- Cost of Maintenance
- Cost of Operation
- Flexibility
- Reliability



OUR TECHNICAL EXPERTS:

SQR ENGINEERING SERVICE LTD. Engineers are experienced in a wide range of project activities. Our employee stays abreast of the latest developments in the industry, allowing us to provide our clients with the most appropriate solutions to meet their needs.

Name of Employee	Field of Experience
Engr. Anwar Ul Karim, MBA, PMP B.Sc Engineer (Mechanical) Advisor & Consultant MIEB No M/34416	18 years professional experience in A. Consultancy, Erection, Fabrication, Installation, Inspection, and Testing of Power plant. Fire Safety B. Design, Drawing, Estimation of, Dyeing, Weaving, Washing Plant.
Engr. Mohammad Hossain B.Sc Engineer (EEE)MIEB Low Voltage Product training ABB (India) (Director)	15 years professional experience in A. Power Generation ,HT System, Transmission ,PFI & LT Switchgear Sub-Station Equipments.at Power plant, Leaf Processing Plant, Co-Generation. B. Consultancy of Electrical System in Power Plant & Industrial Sector
Engr. Md.Mamun Hossain B.Sc in (EEE) BUET (Director)	06 years professional experience in A. Piping Design, Drawing, Estimation of Leaf Processing Plant, Dyeing, Weaving, and Washing. A. Erection, Fabrication, Installation, Inspection, and Testing, of Electrical and Instrumentation in power plant
Engr. Masud Rana Engineer (Civil) (Designer)	4 years professional experience in A. Piping Design, Drawing, Protection ,Detection Estimationof Leaf Processing Plant, Dyeing
Md. Mohsinur Rahman B.Sc (Mechanical) Project Engineer	3 years professional experience in A. Erection, Fabrication, Installation, Inspection, and Testing, of Fire Safety and Instrumentation in project .



SQR ENGINEERING SERVICE

Total Fire Building & Safety Solutions

Service Quality Reliable.....

Head Office : 18, Sonargong Road (3rd Floor) Hatirpool,
(Be Side of Nahar Plaza) Dhaka-1000, Bangladesh.
Cell : +8801797104022, +8801687314148
Tel: +88-02-8615500, Fax : +88-02-8332115,
E-mail: sqr.engineering.service@gmail.com, www.sqrbd.com

Gazipur Workshop : House #135, Road # Ladu molla,
Dattapara, Tangi, Gazipur. Cell : +8801797104022
E-mail: sqr.engineering.service@gmail.com. www.sqrbd.com

Chittagong Office : House # 113, Block # A,
RosolBagh Area, Chawkbazar, Chittagong, Bangladesh.
Cell : +8801922387919, Tel: +88-02-718981, Fax: +88-02-8332115
E-mail: sqr.engineering.service@gmail.com. www.sqrbd.com